

PALLETS

LIGHT DUTY EXPORT PALLETS

- Low cost lightweight alternative to wood pallets.
- Made of 100% recycled plastics and completely recyclable
- These low cost, single use pallets are designed for export oriented companies.
- Pallets are nestable for easy storing and space saving.
- 4-way entry for both forklift and pallet truck
- Streamlines customs process and reduces shipping delays
- ISPM 15 exempt



Model No.	Dimensions				Capacity lbs.		Wt. lbs.	Price /Each
	L"	x	W"	x	H"	Static		
MN457	40	x	48	x	5.2	3500	1500	12.5

NESTABLE EXPORT PALLET

- Economic, environmental and efficient alternative to wood pallets
- 100% recyclable export pallet
- Low cost lightweight pallet ideal for export and one way shipments
- Flow thru design allows for easy cleaning
- Pallet Entry: 4-Way
- ISPM 15 exempt

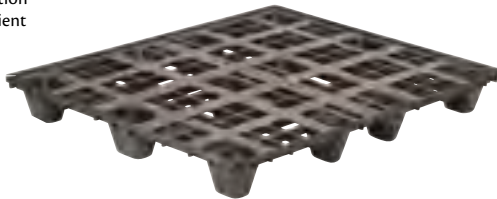


ORBIS

Model No.	Dimensions				Capacity lbs.		Wt. lbs.	Price /Each
	L"	x	W"	x	H"	Static		
MN725	48.2	x	40.2	x	5.75	15 000	2000	23.2

NESTABLE LIGHTWEIGHT PALLETS WITH LIP

- 5/8" raised edge surrounding the deck prevents loads from sliding off
- Single faced, one-piece high-density polyethylene construction
- Cleans easily with efficient drainage design
- Nestable
- 4-way fork lift and 2-way pallet truck entry
- ISPM 15 exempt



ORBIS

Model No.	Dimensions				Capacity lbs.		Wt. lbs.	Price /Each
	L"	x	W"	x	H"	Static		
CB521	48	x	40	x	5 1/2	10 000	2500	21

Also available in USDA/FDA approved material for non-direct food contact.

NESTABLE SINGLE-FACED PALLETS

- One piece structural foam pallets are lightweight, nestable and recyclable
- High density polyethylene construction
- Large rectangular legs make it an excellent choice for most conveyor systems
- Stacks 15 high in only 48" for cost effective transport
- Fork lift: 4-ways
- Pallet truck: 4-ways
- Colour: Black
- ISPM 15 exempt

ORBIS



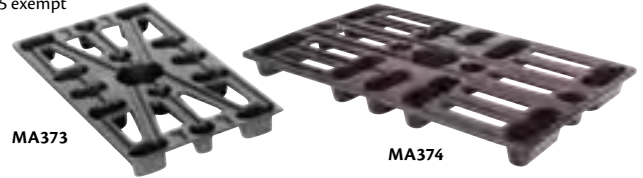
Model No.	Dimensions				Capacity lbs.		Wt. lbs.	Price /Each
	L"	x	W"	x	H"	Static		
CB524	48	x	48	x	5 3/4	30 000	4000	45.5

PLASTIC PALLETS

VALLEYCRAFT
ALL-SEASON

Sturdy, lightweight pallets with rigid centre supports offer versatile, damage-free storage and movement for a wide range of materials. Suitable for the handling of all materials in paper, plastic or burlap bags; as well as tires, construction materials and items under assembly.

- Injection-molded plastic is easy to clean and resistant to both chemicals and weather
- Nestable (each adds only 5/8" to the height of a stack)
- 1 1/2" deep stringers can also be handled by a standard forklift
- ISPM 15 exempt



Model No.	Deck Size L" x W"	Stringer Height"	Construction	Capacity lbs.		Wt. lbs.	Price /Each
				Static	Dynamic		
MA373	24 x 12	1 1/2	Black Plastic	800		1	
MA374	24 x 15	1 1/2	Black Plastic	800		1 1/4	

STACK'R LD PALLETS

ORBIS

- Open deck with stringer
- Designed specifically for stacking applications
- Made of 100% recycled content
- Lower per-trip cost than alternative pallets
- Versatile handling with 4-way hand and fork truck entry
- Lighter weight for better ergonomics
- ISPM 15 exempt



Model No.	Dimensions				Capacity lbs.		Wt. lbs.	Price /Each
	L"	x	W"	x	H"	Static		
MN714	48	x	40	x	5.9	30 000	4000	44.4

SMOOTH-DECK NESTABLE PALLETS

- Manufactured in HDPE Structural Foam
- Empty pallets nest for a cost-efficient return trip or warehouse storage.
- Lightweight and easy to manually handle, with no nails, splinters or broken boards to risk employee injury
- 4-way entry using both Fork Truck or Hand Trucks
- An economic and environmental alternative to wood pallets or skids.
- Exempt from ISPM 15



ORBIS

Model No.	Dimensions				Capacity lbs.		Wt. lbs.	Price /Each
	L"	x	W"	x	H"	Static		
MN171	48	x	40	x	6	30 000	4000	37

RETAIL DISPLAY PALLETS

- Modular
- This pallet offers marketers an attractive display solution with efficient material handling
- Easily creates in-aisle or end-of-aisle displays
- The flat, smooth surface allows for easy set up in a warehouse or co-packing facility
- Can be moved directly to sales floor to reduce labor costs and maximize storage space
- Decreases safety liabilities and product shrink by eliminating sharp edges, splinters and nails found in wood alternatives
- Pallet Entry: 4-Way
- ISPM 15 exempt

ORBIS



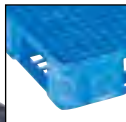
Model No.	Dimensions				Capacity lbs.		Wt. lbs.	Price /Each
	L"	x	W"	x	H"	Static		
MN709	24	x	24	x	5.5	8000	1000	9
MN713	48	x	24	x	5.5	15 000	2000	19
MN710	48	x	48	x	5.5	20 000	4000	38
MN712	48	x	40	x	5.5	30 000	4000	39.3

ONE PIECE RACKABLE PALLETS

- Ideal for use in food industry and in situations where higher capacity racking capabilities are important
- Double-deck, one piece construction with an open grid and large corner for easy cleaning
- Standard high density polyethylene or FDA compliant HDPE virgin material for direct food contact
- In an edge-supported rack, pallet can hold up to a 2000 lbs. evenly distributed load
- 4 way fork lift or pallet truck entry
- Colour: Standard-Black, FDA compliant material-Blue
- ISPM 15 exempt



FDA Compliant Material



Standard
ORBIS

Model No.	Dimensions L" x W" x H"	Description	Capacity lbs.		Wt. lbs.	Price /Each
			Static	Dynamic		
CB536	48 x 40 x 6 5/8	Standard	30 000	5000	45	
CB537	48 x 40 x 6 5/8	USDA/FDA	30 000	5000	45	

Note: Test for pallet deflection on loads over 2000 lbs. when used with unsupported (edge-supported) pallet rack.

STACK'R MD PALLETS

- Open Deck With Stringer
- Designed specifically for stacking and racking applications
- Made of 100% HDPE
- The smooth, non-porous construction protects product and does not absorb moisture or odor
- Pallet Entry: 4-Way
- ISPM 15 exempt

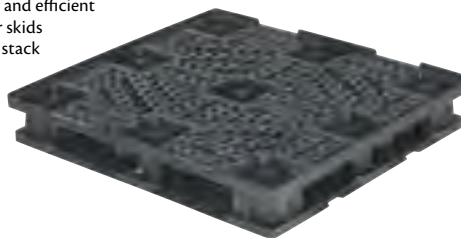


ORBIS

Model No.	Dimensions L" x W" x H"	Capacity lbs.		Wt. lbs.	Price /Each
		Static	Dynamic		
MN726	48 x 40 x 5.9	30 000	4000	44.4	

DOUBLE DECK STACKABLE PALLETS

- Designed for handling and shipping heavy products
- Manufactured in HDPE structural foam
- An economic, environmental and efficient alternative to wood pallets or skids
- Double deck design, ideal for stack loading, conveying systems, distribution and static storage
- 4-way entry for fork and hand trucks
- ISPM 15 exempt



ORBIS

Model No.	Dimensions L" x W" x H"	Capacity lbs.		Wt. lbs.	Price /Each
		Static	Dynamic		
MN168	48.7 x 45.7 x 7.5	30 000	4000	62	

MEDIUM-DUTY FOOD GRADE PALLETS

- Typically used in the food industry
- 1-piece construction with an open grid for easy cleaning
- Made of FDA compliant HDPE virgin material for direct food contact
- Edge-supported pallet on a rack can hold up to a 2200-lb evenly distributed load
- 4-way fork lift or pallet truck entry
- ISPM 15 exempt



Model No.	Dimensions L" x W" x H"	Capacity lbs.		Wt. lbs.	Price /Each
		Static	Dynamic		
MN490	48 x 40 x 6 5/8	25 000	5000	35	

RACKSTAR II™ PALLET

- Highly impact resistant design
- Internal reinforcements meet aggressive application requirements
- 100% recyclable with fully removable reinforcement structure
- Solid wall design for increased durability
- 4-way forklift accessible
- Easy to sanitize
- Removable/repairable stringers or full frame bottom, with easy-to-replace fasteners, are available for added capacity in forklift and conveyor use
- Perimeter molded-in lip options offer secure product loading and stacking
- Rackable
- ISPM 15 exempt

Rackstar II™ Pallet



ORBIS

Model No.	Dimensions L" x W"	Description	Capacity lbs.		Capacity lbs.			Wt. lbs.	Price /Each
			Static	Dynamic	Decking	Centre Supports	Edge Supported		
CC163	48 x 40 x 6"	without lip (includes 16 deck grommets)	30 000	6000	6000	6000	3000	56.6	

EXTRA-LONG STACKABLE PALLETS

- Pallet is fully reversible for double stacking of loads
- Manufactured in HDPE structural foam
- Designed for handling and shipping heavy product loads
- Ideal for stack loading, conveying systems, distribution and static storage
- 4-way entry for fork trucks
- ISPM 15 exempt

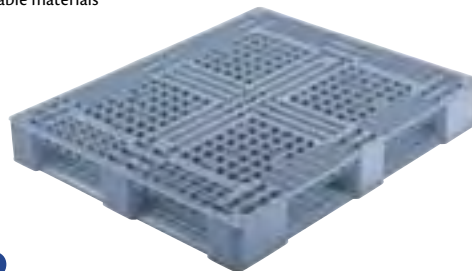


ORBIS

Model No.	Dimensions L" x W" x H"	Capacity lbs.		Wt. lbs.	Price /Each
		Static	Dynamic		
MN170	72 x 48 x 5.8	30 000	4000	110	

MEDIUM-DUTY RACKABLE PLASTIC PALLETS

- Unique rib design for easy cleaning and sanitary applications
- Edge-supported racking application, maximum capacity of 1400 lbs.
- Bottom design of pallet ideal for automated conveying
- Anti-skid grommets on both top and bottom
- High pressure injection molded plastic pallets made with recyclable materials
- Grey
- ISPM 15 exempt



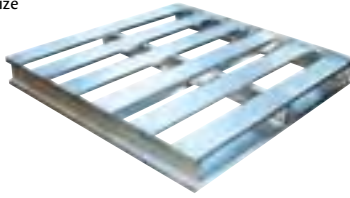
MONOFLO
INTERNATIONAL, INC.

Model No.	Dimensions L" x W" x H"	Capacity lbs.		Wt. lbs.	Price /Each
		Static	Dynamic		
MN172	48 x 40 x 6	30 000	3000	42	

PALLETS

ALUMINUM PALLETS

- Welded aluminum construction provides superb weight-to-load ratio
- Ideal for heavy industrial, food, electronics, telecommunications, pharmaceuticals and consumer goods
- Long service life indoors and outdoors, lightweight and low maintenance
- Resists fire, freezing temperatures, chemicals, rust and insects
- Always looks clean, easy to wash and sterilize
- Works seamlessly with automated and mechanized material handling equipment
- 2-way fork entry, ridged deck boards provide grip to reduce load shifting
- ISPM 15 exempt



Model No.	Dimensions				Capacity lbs.		Wt. lbs.	Price /Each
	L"	x	W"	x	H"	Static		
CF416	48	x	42	x	6	6000	4000	40
CF417	48	x	48	x	6	6000	4000	50

PALLET NO STACK® CONES

- Prevent damage to your shipment with No Stack® signs - warns against double stacking your shipment, ensuring your shipment remains on top
- 3 dimensional anti-stack warning devices, that easily crushes if stacked on, proof that your shipment was mishandled
- Strap easily to the top of your pallet, or attach with packaging tape
- 100/package



Model No. PC616
Price/Each \$

LABEL HOLDERS

- Clearly identify your shelf/bin contents with the efficient and time-saving Aigner holders
- Versatile, highly protective, easy to read, and even custom designed with a special matte finish making bar code applications easy
- Ideal for all types of racking, shelving and bin/drawer storage systems
- Labels provided
- Sold in packages of 12



HOL-DEX®

- Can be custom cut to your specific size specifications
- Colour: Clear



Model No.	Dim. W" x L"	Price /Package
SELF-ADHESIVE		
OA340	1/2 x 6	
OA339	3/4 x 6	
OA341	1 x 6	
OA338	2 x 6	
MAGNETIC		
RG650	1/2 x 6	
OA389	3/4 x 6	
OA336	1 x 6	
HOOK & LOOP		
RG660	1 x 6	
RG665	2 x 6	

SUPERSCAN®

- Available in 4 extra large sizes for pallet racking installation
- Clear plastic matte finish assures precise bar code reading everytime
- Inserts are laser ink jet printer compatible for easy labeling
- Colour: Clear



SUPERSCAN® (CLEAR ONLY)

Model No.	Dimensions W" x L"	Qty /Box	Price /Box
SELF-ADHESIVE			
OG356	2 x 3.5	50	
RG670	3 x 5	50	
RG671	4 x 6	50	
RG681	5 x 7	25	

Model No.	Dimensions W" x L"	Qty /Box	Price /Box
MAGNETIC			
OG357	2 x 3.5	50	
RG672	3 x 5	50	
RG673	4 x 6	50	
RG683	5 x 7	25	

ROLL PALLETS

- Rotationally molded of durable polyethylene
- Lightweight pallets handle rolls up to a maximum diameter of 42"
- Molded construction eliminates product damage due to splinters and nails
- 2-way forklift entry
- ISPM 15 exempt



Model No.	Dimensions				Capacity lbs.	Wt. lbs.	Price /Each
	L"	x	W"	x			
CB535	21	x	38 1/2	x	8 1/2	1500	24

DRUM PALLETS

The 48" x 48" one-piece drum pallet features four molded-in rings to secure the drums during transportation, underside rings for secure double stacking and complete flow through design.

- Structural foam
- Pallets fit side by side in regular trailers
- Standard colour: Black
- Fork truck entry: 4-ways
- Hand truck entry: 4-ways
- ISPM 15 exempt



Model No.	Dimensions			Capacity lbs.		Wt. lbs.	Price /Each	
	L"	x	W"	x	H"			Static
CC153	48.8	x	48.8	x	5.5	30 000	4000	42

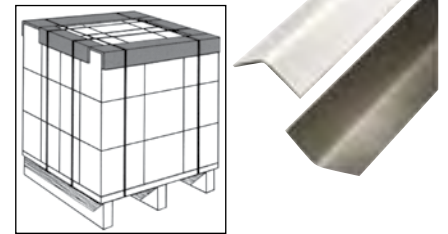
EDGEBOARD CORNER PROTECTORS

Improves stocking strength and cushions package edges against hard knocks.

Also helps improve the flow of strapping and stretch film around the product.

20/package.

Pallet quantities are available. Other thicknesses & lengths available upon request.



PRE-BUNDLED PACKS

Model No.	Leg"	Thickness"	Length"	Price /Each
PB264	2.5 x 2.5	0.200	36	
PB265	2.5 x 2.5	0.200	42	
PB266	2.5 x 2.5	0.200	48	
PB267	3 x 3	0.200	36	
PB268	3 x 3	0.200	42	
PB269	3 x 3	0.200	48	

SLIP 'N STICK™ AISLE SIGNS

- Create your own customised warehouse signs
- Built-in flexible hinge prevents breakage
- Included: 10 sign holders (11" x 8 1/2"), 12 yellow laser/ink jet sheets and instructions



SNAP-ON

- Snaps into pallet rack assembly holes, can snap out to relocate

Model No. OE798
Price/Each \$

SELF-ADHESIVE

- Adheres to flat surfaces, for more permanent applications

Model No. OJ943
Price/Each \$