

STRETCH WRAP, FOAM & SHIPPING SUPPLIES

CORRUGATED CARTONS

There's no need to put shipments on hold while you wait for custom carton orders, or stock more cartons than you need. These 125 to 200-lb. test cartons withstand rough handling during shipment.

- Flute style: C



Priced per Box

Model No.	Inside Dimensions				Test D"	lbs./Flute	Price /Each
	L"	x	W"	x			
PA136	6	x	6	x	6	125C	
PA137	7	x	4	x	4	125C	
PA138	8	x	6	x	4	125C	
PA140	8	x	8	x	8	125C	
PA141	9	x	6	x	6	125C	
PA112	10	x	10	x	10	125C	
PA113	11	x	10	x	3	125C	
PA132	12	x	12	x	7	125C	

Model No.	Inside Dimensions				Test D"	lbs./Flute	Price /Each
	L"	x	W"	x			
PA114	12	x	12	x	12	125C	
PA139	13	x	8	x	6.5	125C	
PA115	13	x	10	x	10	125C	
PA133	14	x	12	x	8	125C	
PA116	15	x	11	x	11	175C	
PA117	16	x	12	x	10	175C	
PA118	16	x	16	x	16	175C	
PA122	18	x	12	x	6	175C	
PA123	18	x	12	x	9	175C	
PA120	18	x	12	x	12	175C	
PA121	18	x	15	x	10	175C	
PA119	18	x	18	x	18	175C	
PA126	20	x	20	x	20	175C	
PA111	21	x	14.5	x	15	175C	
PA127	21	x	15	x	11	175C	
PA125	21	x	20	x	16	200C	
PA135	24	x	14	x	24	200C	
PA124	24	x	19	x	19	175C	
PA129	24	x	19	x	24	200C	
PA131	26	x	19	x	30	200C	
PB501	14	x	14	x	14	175C	
PB502	26	x	26	x	26	200C	
PB503	30	x	30	x	30	200C	
PB504	36	x	36	x	36	200C	

Note: Other sizes available upon request

CORRUGATED PADS

- Protect layers of products on skids from sharp edges and from being crushed when double stacked
- Guard against forklift damage when moving pallets
- Flute style: C



Large Pads



Small Pads

Priced per Pad

Model No.	Dimensions			Test lbs./Flute	Bndl/ Bale Qty.	Price /Each
	L"	x	W"			
LARGE PADS						
PB505	16	x	16	200C	50/1500	
PB518	36	x	48	200C	25/250	
PB520	42	x	40	200C	25/250	
PB521	40	x	48	200C	25/250	
PB525	48	x	72	200C	10/250	
PB526	48	x	96	200C	10/250	
SMALL PADS (USED TO SEPARATE & PROTECT ITEMS)						
PB534	12	x	12	150C	50/3000	

TELESCOPIC CORRUGATED BOXES

- Eliminate custom made box orders with our line of telescopic boxes.
- Ideal for shipping irregularly shaped items such as:
 - Golf clubs
 - Bulky replacement parts
 - Carpet rolls
 - Maps, banners or signs
 - Shelving
 - Tools and equipment
 - Fishing poles
- Flute Style: C



Priced per Box

Model No.	Dimensions				Test lbs./Flute	Bndl/ Bale Qty.	Price /Each
	L"	x	W"	x H"			
PB540	6	x	6	x	24-48	175C	25/500
PB541	6	x	6	x	36-72	175C	25/500
PB543	8	x	8	x	24-48	175C	25/250
PB546	12	x	12	x	24-48	175C	15/120
PB547	12	x	12	x	36-72	175C	15/120

CARTON SIZER

- Ideal for cutting boxes down to the desired depth
- Lowers cost on shipping and packaging fill materials
- 12" ruler allows for precise measuring
- Replacement blade: PF346

Model No. PF345

Price/Each \$



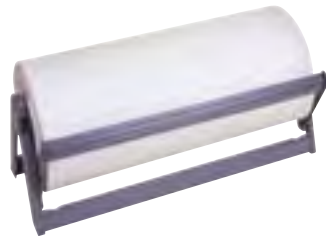
See new Kleton
Box Sealing Tape on page 1410



STRETCH WRAP, FOAM & SHIPPING SUPPLIES

STANDARD ALL-IN-ONE PAPER CUTTERS

- Unit smoothly dispenses light to heavy weight kraft and other papers
- Cuts evenly using either side of a double edged spring load blade
- Holds up to 9" diameter rolls
- Rugged all steel, grey powder coat finish
- Can be wall mounted, countertop or under counter
- Rubber cushions to protect surface



BULMAN

Model No.	Paper Width"	Price/Each
PC612	18	
PC613	24	
PC614	30	
PC615	36	
PC981	48	

VERTICAL PAPER CUTTERS

- Heavy-duty welded construction
- For single rolls
- Designed to accommodate paper roll widths between 15" and 48"
- Holds up to 9" diameter rolls
- Features a spring-loaded blade for fast, even cuts
- Automatic blade locking device for easy roll change
- Optional casters available
- Light grey powder coat finish



BULMAN

Model No.	Paper Width"	Price/Each
PC640	15, 18 & 20	
PC641	24 & 27	
PC642	30 & 36	
PC985	40 & 48	

PORTABLE RAZOR-X CUTTERS

- Fast, sure dispensing and cutting of packing materials such as single-face corrugated or thin foams
- Constructed of heavy-duty, tubular steel to hold one or more rolls of material
- Rests on heavy-duty casters for easy mobility
- Wheel locks to assure stability
- Accommodates rolls up to 40" in diameter
- Hold-down strips prevent rollback of material
- Select a rotary shear cutter for heavier materials
- Shipped knocked down



BULMAN

Model No.	Roll Width"	Price/Each
PC931	24	
PC932	36	
PC933	48	
PC934	60	

WORKBENCHES



Model No.	Size"	Wt. lbs.	Price/Each
STEEL - WOOD FILL			
FF672	36 x 72	164	
FF671	36 x 60	156	
FF670	30 x 72	166	
FF669	30 x 60	146	
FF667	24 x 60	110	
LAMINATED WOOD			
FF658	36 x 72	171	
FF657	36 x 60	149	
FF656	30 x 72	150	
FF655	30 x 60	130	
FF653	24 x 60	106	

Model No.	Size"	Wt. lbs.	Price/Each
SHOP TOP			
FF679	36 x 72	171	
FH877	36 x 60	157	
FF677	30 x 72	150	
FF676	30 x 60	133	
FH878	24 x 60	111	
PLASTIC LAMINATE			
FF665	36 x 72	171	
FH879	36 x 60	152	
FF663	30 x 72	150	
FF662	30 x 60	133	
FH880	24 x 60	108	

MULTIPLE ROLL STANDS

- Increases cutting efficiency and productivity
- Allows you to store rolls of different diameters measuring up to 72" high
- Supplied with one roll bar and brackets that bolt to and adjust along the uprights

CONSISTS OF:

- 3- FI332 Roll Bars
- 1- PA220 Cutter Bar
- 1- PE206 Multiple Roll Stand
- 1- FF347 Sorter Support Bracket (set of 2)

CALSTONE INC.
Your Furniture Solutions Partner

Model No.	Dimensions	Wt. lbs.	Price/Each
PE207	59" W x 24" D x 84 1/2" H	76	



DESCRIPTION OF COMPONENTS:

Roll Bar:
Used to hold your packaging material. Comes complete with mounting brackets. 59" L. Wt.: 5 lbs.
Model No. FI332
Price/Each \$

Cutter Bar:
Used to cut standard packaging material, paper, bubble, plastic and some foam. 62". Assembly bar with a 48" material width. Wt.: 6 lbs.
Model No. PA220
Price/Each \$

Multiple Roll Stand:
Comes complete with side frames and base only. 59" W x 24" D x 84 1/2" H. Wt.: 50 lbs.
Model No. PE206
Price/Each \$

Sorter Support Bracket:
Fits onto T-uprights or straight uprights. Adjustable in height along uprights. 1 3/4" W x 17" D x 5" H. Wt.: 5 lbs.
Model No. FF347 **Price/Each \$**

STRETCH WRAP, FOAM & SHIPPING SUPPLIES

BACK-TO-BACK MODULAR PACKING STATIONS

CONSISTS OF:

- 2 - Standard workbench
FF338 (68" x 33") or PA812 (83" x 33")
- 1 - FF343 Roll bars
- 2 - FF344 Carton shelf
- 4 - PE189 Document shelf divider
- 2 - PA697 Floor carton stand



FI712

Model No.	Description	Weight lbs.	Price /Each
FI712	Packing Bench 68" x 33"	418	
FI713	Packing Bench 83" x 33"	436	

FULL FUNCTION MODULAR PACKING STATIONS

CONSISTS OF:

- 1 - Standard workbench
FF338 (68" x 33") or PA812 (83" x 33")
- 1 - FF341 Drawer
- 2 - FF342 Roll bar
- 1 - FF343 Carton shelf
- 1 - FF344 Document shelf
- 3 - PE189 Document shelf divider
- 1 - PA220 Cutter bar and knife



FI714

Model No.	Description	Weight lbs.	Price /Each
FI714	Packing Bench 68" x 33"	260	
FI715	Packing Bench 83" x 33"	269	

STANDARD MODULAR PACKING STATIONS

CONSISTS OF:

- 1 - Standard workbench
FF338 (68" x 33") or PA812 (83" x 33")
- 1 - FF343 Carton shelf
- 1 - FF344 Document shelf



FI716

Model No.	Description	Weight lbs.	Price /Each
FI716	Packing Bench 68" x 33"	199	
FI717	Packing Bench 83" x 33"	208	

MODULAR PACKING STATIONS

CONSISTS OF:

- 1 - Standard workbench
FF338 (68" x 33") or PA812 (83" x 33")
- 1 - FI546 Carton shelf
- 1 - FF345 Sorter
- 11 - FF346 Shelf for sorter
- 1 - FF347 Bracket for sorter (set of two)
- 1 - FF348 Slot wall
- 2 - FF349 Slot wall hook
- 2 - FF350 Parts bins
- 1 - FF351 Literature trays
- 1 - PA213 Cantilever storage arm
- 6 - FI547 Carton rack divider
- 1 - FF352 Straight uprights (set of two)



FI718

Model No.	Description	Weight lbs.	Price /Each
FI718	Packing Bench 68" x 33"	333	
FI719	Packing Bench 83" x 33"	342	

CALSTONE INC.
Your Furniture Solutions Partner

These ergonomically designed workbenches will help increase productivity in your packaging area. They include a combination of various components. Select the bench best suited for your application. Shipped knocked down.

DESCRIPTION OF COMPONENTS:

Standard workbench: Laminated light grey top. Height adjustable from 28" - 36".

Model No.	Size"	Wt. lbs.	Price/Each
FF338	68 x 33	117	
PA812	83 x 33	135	

Economy workbench: 14 gauge steel top 68" W x 30" D x 32" fixed height. Wt. 102 lbs.

Model No FF339 Price/Each \$

Roll bars: Ideal for holding packing materials, labels and other rolled materials - 57 1/4" L x 1 1/4" dia. Wt. 7 lbs.

Model No. FF342 Price/Each \$

Carton shelf: Comes with 6 wire dividers. Holds up to 125 cartons. 64" L x 17" W. Wt. 48 lbs.

Model No. FF343 Price/Each \$

Floor carton stand: Holds cartons up to 60" high. 44" L x 18" x 26" H. 300 lbs capacity.

Model No.	Description	Wt. lbs.	Price/Each
PA697	Floor Carton Stand	29	

Document shelf: Stores supplies and paperwork. 64" L x 9" W x 9 1/2" H. Wt. 36 lbs.

Model No. FF344 Price/Each \$

Sorter: With 15 openings. 68" L x 15" W x 17 3/8" H. Optional shelves adjustable on 1 1/2" centres. Wt. 79 lbs.

Model No. FF345 Price/Each \$

Shelves for sorter: 11 1/8" W x 15" D shelf for FF345 sorter. Wt. 1.75 lbs.

Model No. FF346 Price/Each \$

Sorter support brackets: Bracket for mounting sorter onto uprights (2 per package) Wt. 6 lbs.

Model No. FF347 Price/Each \$

Cutter bar assembly: Enclosed rotary knife cuts most roll materials. 54" L x 24" W x 8 1/2" H. Cuts material up to 40" W. Wt. 14 lbs.

Model No. PA219 Price/Each \$

Slot wall: T-Slots allow mounting of trays and bins. Mounting brackets included. Wt. 5 lbs.

Model No. FF348 Price/Each \$

Literature shelf: Mounts on slot wall. Allows for off bench storage of invoices, paperwork, etc. 12" L x 12 1/2" W x 4" H. Wt. 5 lbs.

Model No. FF351 Price/Each \$

Uprights: Straight uprights (set of 2). 1 1/2" tube x 44" H. Wt. 23 lbs.

Model No. FF352 Price/Each \$

Parts bins: For use with slot wall to store small parts and supplies. 4" W x 6 1/2" D x 3" H. Wt. 1 lb.

Model No. FF350 Price/Each \$

Slot wall hook: Store rolls and tools. 5" L x 1/4" Dia. Wt. 1 lb.

Model No. FF349 Price/Each \$

Bench drawer: Metal drawer and frame mounts under table top. Lock knock-out included. 15" L x 14 1/2" W x 5" H. (I.D.). Wt. 14 lbs.

Model No. FF341 Price/Each \$

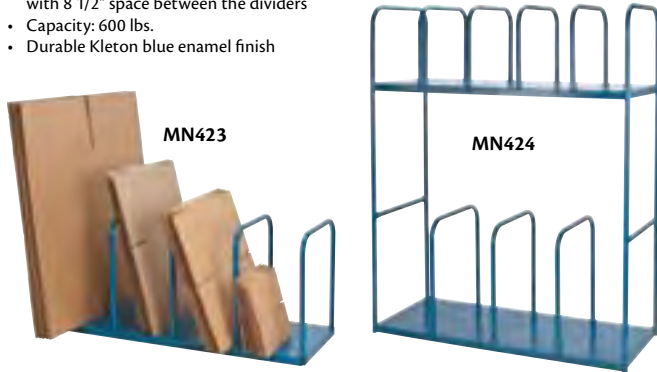
Scale table: Grey laminated top 33" W x 23 1/2" D x 23-32" H adjustable. Wt. 51 lbs.

Model No. FF340 Price/Each \$

STRETCH WRAP, FOAM & SHIPPING SUPPLIES

CARTON RACKS

- All-welded steel construction, ready to use
- Single tier rack has 20" high dividers with 10 1/2" space between the dividers
- Double tier rack has 20" high dividers on the bottom with 10 1/2" space between the dividers and 14" high dividers on the top with 8 1/2" space between the dividers
- Capacity: 600 lbs.
- Durable Kleton blue enamel finish



Model No.	Description	Dimensions				Price /Each
		W"	x	D"	x H"	
MN423	Single Tier Rack	48	x	18	x 22	
MN424	Double Tier Rack	48	x	18	x 58 1/2	
MN425	Optional Caster Set for Carton Rack	-				

SURE TUCK™ MAILERS

- Reinforced corrugated mailers
- 200-lb test, B flute
- Quick-fold design assembles in seconds without tape, staples or glue
- White exterior; shipped and stored flat
- 100/bundle



Priced per Box



Model No.	Inside Dimensions					Price /Each
	L"	x	W"	x	D"	
PA096	3	x	3	x	3	
PA099	4	x	3	x	2	
PA100	4	x	3	x	3	
PA101	4	x	4	x	3	
PA104	5	x	3	x	3	
PA105	5	x	5	x	3	
PA106	6	x	3	x	2	
PA107	6	x	4	x	3	
PA108	7	x	4	x	3	
PA109	8	x	4	x	4	
PA110	9	x	4	x	3	
PA085	10	x	4	x	4	

FLEX-GUARD™ SAFETY CUTTERS

- Ideal for cutting through single-wall, double-wall and triple-wall corrugated boxes
- Featuring an automatic dual protection system
- Allows the user to keep their thumb on or off the blade slide, keeping hands safe from cuts and lacerations
- Blade guard is activated once the cut is started
- Uses rounded tip safety blades; helps to prevent puncture related injuries
- Blade extends 3/8" (10 mm) from cutter



Model No. PC560 Mfg. No. SK-6 Price/Each \$

REPLACEMENT BLADES

Model No. PC561 - 10/pkg. Mfg. No. RSKB-2/10B Price/Each \$
 Model No. PC562 - 50/pkg. Mfg. No. RSKB-2/50B Price/Each \$

PROTECTIVE LITERATURE MAILERS

- A secure way to send out computer printouts, catalogues, binders manuscripts and books
- 200-lb test
- Shipped flat; sets up in seconds without tape or staples
- White corrugated



Priced per Box

Model No.	Inside Dimensions					Price /Each
	L"	x	W"	x	D"	
PA087	11 1/8	x	8 3/4	x	4	
PA097	11 3/4	x	10 3/4	x	2 1/4	
PA088	12 1/8	x	9 1/4	x	4	
PA144	15 1/8	x	11 1/8	x	2	
PA143	15 1/8	x	11 1/8	x	4	

POSTAL TUBES

SNAP-SEAL MAILING TUBES

- Reusable
- Economical
- No need for taping, tying or stapling
- Press crimped ends together to close tightly
- Simply flip to open ends
- Colour: Kraft



Priced per Tube



Model No.	Dimensions			Price /Each
	Dia. "	x	L"	
PC081	2	x	18	
PC082	2	x	24	
PC083	2	x	30	
PC084	2	x	36	
PC085	3	x	18	
PC086	3	x	24	
PC087	3	x	30	
PC088	3	x	36	

PLUG-SEAL MAILING & PACKAGING TUBES

- Ideal for storing drawings, maps, premium and promotional items that require protection
- Plastic end caps are friction fitted and may be stapled in place
- Prices include two caps per tube



Priced per Tube



Model No.	Dimensions			Price /Each
	Dia. "	x	L"	
PC089	2	x	25	
PC090	2	x	31	
PC091	2	x	37	
PC092	2	x	43	
PC093	2.5	x	25	
PC094	2.5	x	31	
PC095	2.5	x	37	
PC096	2.5	x	43	
PC097	3	x	25	
PC098	3	x	31	
PC099	3	x	37	
PC100	3	x	43	