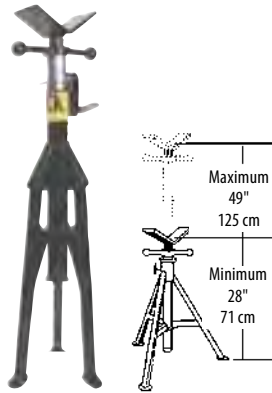


FOLD-A-JACK® HI JACKS

- 1" square tube base construction
- Quick-action lock washer for quick height positioning
- Patented Fall Guard™ feature allows 1" safety zone around lock washer
- 1 1/2" Acme fine adjustment thread handle, the largest in the industry
- Large, convenient adjustment handle
- Set screw for double margin of safety, can lock jack head to stand for transportation, no loose pieces
- Perfect for work height on shapes or pipes 24" in diameter or smaller
- Carrying handle for ease of transporting
- Jack independently load tested for quality assurance
- 2500-lb capacity
- CE rated



HEAD STYLES



| Model No. | Mfg. No. | Description | Price /Each |
|-----------|----------|-----------------------------------|-------------|
| 432-1161 | 781300 | ST-881 w/Vee-Head | |
| 432-1162 | 781301 | ST-882 w/Roller Head | |
| 432-1163 | 781302 | ST-883 w/Bar Stock Head | |
| 432-1164 | 781303 | ST-884 w/Stainless Steel Rollers | |
| 432-1166 | 781304 | ST-885 w/Stainless Steel Vee-Head | |
| 432-1167 | 781305 | ST-886 w/Ball Transfer Head | |
| 432-1168 | 781306 | ST-887 w/Rubber Wheels | |

POCKET PRO LEVELS

- Extra strong magnet will hold it firmly to any steel surface
- Two stationary vials are placed at 90° angles of each other and can be read from any surface of the level
- Vials are easily replaced if broken
- Dial is in 2 1/2° degree increments with spring tension for easy operation
- 9" long and 1 1/2" wide for easy handling and storage
- Pitch to degree conversion scales

Model No. 496-1185
Mfg. No. PP-200
Price/Each \$



flange wizard tools

See page 1281 for our line of Levels



SUMNER

QWIK PINS SETS

- For fast, accurate alignment of carbon steel pipe flanges
- Quick installing pins work to level flange (two-hole) for tack and weld-out
- Hardened tapered Qwik Pins automatically center on 5/8" to 1 5/8" (16 - 42 mm) holes
- Features Acme threads for maximum clamping power and hardened steel for long-lasting use



| Model No. | Mfg. No. | Price /Each |
|-----------|----------|-------------|
| TTU664 | 781235 | |

FLANGE LEVELERS

- Now two-hole and level in one time-saving operation
- Uses push-button Qwik Pins set nuts for fast action
- Features stub Acme threads for maximum clamping and hardened steel for lasting use
- Automatically centers in flange holes 5/8" to 1 5/8"
- Easily replaceable vials in the event of breakage

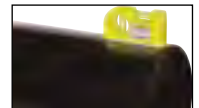


| Model No. | Mfg. No. | Description | Price /Each |
|-----------|----------|----------------|-------------|
| TTU665* | 781240 | Flange Leveler | |
| TTU666 | 779934 | Vial Kit | |

*Priced per set

POCKET LEVELS

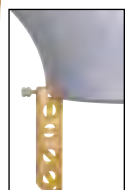
- A twin vial level constructed of tough ABS and aluminum frame
- Strong magnetic base makes this pocket size level great for many tasks:
 - Can be used with a plumb bob
 - Level pipe for fit-up
 - Earth magnet on base and side to hold measuring tape
- Weights only 3 oz.



| Model No. | Mfg. No. | Price /Each |
|-----------|----------|-------------|
| TTU667 | 781947 | |

VERSA LEVELS

- Featuring a tough, anodized body and a magnetic base
- Four vials - 0°, 30°, 45°, and 90°
- V-cut into the base for pipe and conduit work
- Thumb screw connects to pipe or bent conduit



| Model No. | Mfg. No. | Price /Each |
|-----------|----------|-------------|
| TTU668 | 781945 | |

QUAD LEVELS

- Tough, anodized aluminum level with a magnetic base
- Four vials - 0°, 30°, 45°, and 90°
- V-cut into the base for pipe and conduit work
- Length: 8 1/2"



| Model No. | Mfg. No. | Price /Each |
|-----------|----------|-------------|
| TTU669 | 781946 | |

PIPE LAYOUT MEASURING TOOLS

CONTOUR® #1 MARKER

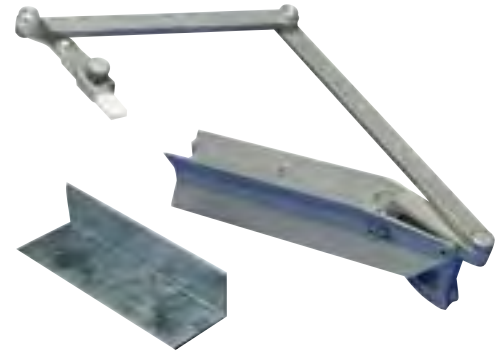
Made from durable, lightweight aluminum

- Curv-O-Mark® Contour® Marker is a compact, time-saving tool used to lay out pipe and structural steel joints
- Laterals at any angle, tees, wyes, crosses, elbows
- Any type or size of joint can be quickly and precisely laid out
- No more complicated mathematical formulas or needless material waste
- Can be used to lay out pipe from 1-1/2" to 18" diameter, or structural steel members up to 18"
- Consists of an X-shaped frame, calibrated protractor, and a triple-jointed marking arm and holder
- Holder accepts a soapstone crayon (included), felt pen or pencil
- Frame easily folds into a compact tool that fits into a pocket or carrying case
- Can be used right side up or upside down, depending on the direction of the line to be scribed
- Protractor calibrated on both sides—one in degrees, the other in rise-inches-per foot-to service any type of measurement need
- Optional combination adaptor accessory allows the marker to lay out joints on larger size pipe, as well as scribe compound angles with just one setting

Model No. 430-2000

Mfg No. 14771

Price/Each \$



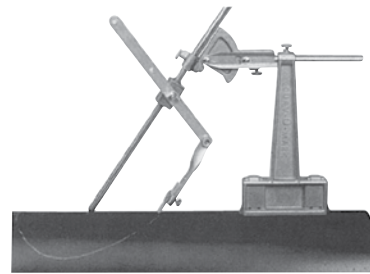
CONTOUR® #14 CIRCLE-ELLIPSE PROJECTORS

- Easily makes perfect circles, ellipses or oblong circles on any irregular flat or round surface
- Features a protractor with sliding rods and an adjustable lever to lock in the specified layout
- Strong, 20-lb pull magnetic base holds the projector in position during layout
- Durable web strap (included) holds the unit secure on non-magnetic surfaces and can be used on either side of the vertical column
- Lay out lateral intersections of different diameter pipes, or to project circles from 1 1/2" to 18" diameter on flat surfaces intersecting at angles from 0° to 70° from vertical
- Attachments to develop larger diameter circles are available
- Includes: Soapstone crayon and also works with chalk, pencil or steel scribe

Model No. 430-2110

Mfg. No. 14784

Price/Each \$



CONTOUR® RADIUS MARKERS

- Available in four sizes for scribing circles up to 80" diameter
- Folding type design—three smaller models will fit conveniently into a shirt pocket
- All have sturdy friction joints to maintain rigidity and accuracy
- Made from lightweight, rustproof aluminum for long wear
- Soapstone crayon installed in each radius marker
- Scribe holder will accept round, square or flat soapstone crayon, pencil or steel point scribe



| Model No. | Mfg. No. | Description | Radius" | Price /Each |
|-----------|----------|-------------|----------|-------------|
| 430-2580 | 14780 | Mini | Up to 8 | |
| 430-2590 | 14781 | Small | Up to 20 | |
| 430-2600 | 14782 | Standard | Up to 24 | |
| 430-2610 | 14783 | Jumbo | Up to 40 | |

CONTOUR® CENTERING HEADS

Aid in the setting of centerlines, establishing angles and marks for butt-ins, locating points inside pipes and tanks, laying out keyways and measuring declivity.



#6 Standard Model

- Used on pipe 1/2" to 4" diameter or larger
- Fitted with an adjustable dial bubble protractor (DSL), manually operated centering pin

#7 Jumbo Model

- For pipe 1" diameter and up
- Includes DSL
- Spring-loaded hardened centering pin eliminates the need for a hammer
- Align and press the trigger



| Model No. | Mfg. No. | Type | Head Type | Head Width" | Price /Each |
|-----------|----------|----------|-----------|-------------|-------------|
| 430-2050 | 14775 | Standard | Y | 4 | |
| 430-2070 | 14776 | Jumbo | Y | 8 | |

CONTOUR® #32 FLANGE ALIGNER BASES

- Removes the difficulty of flange aligning and squaring
- Holds square in the needed position without tying up one's hands
- Notched at either end for ease in aligning on the centreline of the pipe and has two 25 lb-pull, cast-in magnets for holding either a flat horizontal or vertical position
- Accepts either leg of a standard or combination square and will work on pipe diameters from 1" up, requiring only extension of the legs of the square being used to accommodate larger diameters
- Made from lightweight, durable aluminum



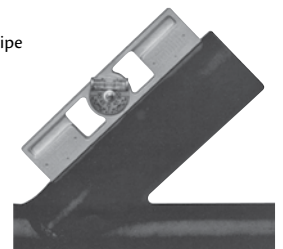
Model No. 430-2230

Mfg. No. 14795

Price/Each \$

CONTOUR® #8 PRO-MAG LEVELS

- Made from cast aluminum
- Lightweight, easy-to-use tool for determining angles
- 360° adjustable DSL with two 90° quadrants graduated in 2-1/2" increments
- Cast-in tables used to convert degree-of-angle to rise-in-inches-per-foot or millimetres-per-meter
- Groove on the bottom edge permits use on a small pipe
- Ideal for pipe fitter, welder, jig builder or anyone who has to determine angles or do setup work
- Includes two cast-in 25-lb pull magnets that hold securely to any steel surface
- 9" L x 2" H x 3/4" Thick



Model No. 430-2080

Mfg. No. 14777

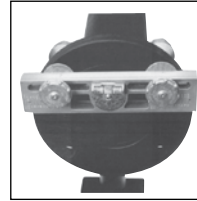
Price/Each \$

CONTOUR® #33 UNIVERSAL LEVELS

- Multipurpose tool
- Designed primarily for pipefitting applications, is a valuable tool for any craft required to use a level or plumb bob
- Unit features a 360° adjustable protractor dial set level bubble (DSL) that ensures accurate levelling and permits the following additional uses:
 - Setting a predetermined pitch of a string of pipe
 - Setting the angle of laterals to a precise degree
 - Trueing vertical runs
 - Two-holing flanges
- Permits hands-free levelling, for tight spots
- Bubble is mounted on a protractor dial allowing for the level to be used in any position and still read accurately
- One face of the level is magnetic but both faces have deep, cast-in grooves that make the level self-centering on the contour of the pipe
- Magnets are cast-in, they do not interfere with the use of the level on non-magnetic materials, such as aluminum, copper, lumber, stone or other materials requiring levelling

- Comes with a two-threaded, self-aligning conical spacer and conical nut and bolt units for aligning pipe flanges (two-holding)
- Designed to fit any size bolt hole spaced between 2-1/4" to 8" centres on flanges permitting the orientation of flange bolt holes for any size pipe
- Includes: Two cast-in 25-lb magnets (exerting a 50-lb pull) to securely hold the unit in place on any steel surface, including the underside of a pipe or beam

Model No. 430-2240
Mfg. No. 14796
Price/Each \$



CONTOUR® WRAP-A-ROUNDS

- An inexpensive tool for marking straight lines around pipe, or for use as a straight edge
- Made of flexible gasket material
- Resistant to heat and cold
- Asbestos free with service temperature of up to 350°F
- Printed with a scale in inches, pitch chart, tangent chart and other useful markings except X-small
- 3.88" and 5.00" wraps feature a metric scale and pitch chart



| Model No. | Mfg. No. | Size | Dimensions | | | Pipe Dia." | Price /Each |
|-----------|----------|----------|----------------|---|------|------------|-------------|
| | | | L' | x | W" | | |
| 430-2330 | 14752 | Medium | 4 | x | 3.88 | 3 to 6 | |
| 430-2370 | 14753 | Large | 6 | x | 3.88 | 3 to 10 | |
| 430-2410 | 14754 | X-Large | 7 | x | 5.00 | 4 to 12 | |
| 430-2450 | 14756 | XX-Large | 9 | x | 5.00 | 6 to 16 | |
| 430-2490* | 14757 | Special | Length desired | x | 3.88 | - | |
| 430-2520* | 14758 | Special | Length desired | x | 5.00 | - | |
| 430-2550* | 14759 | Special | Length desired | x | 7.00 | - | |

*Special lengths available up to a maximum of 375'

CONTOUR® #28 MAGNETIC BURNING GUIDES

- Designed for use with a burning torch or as a straight edge
- Cast of strong, durable material to withstand heat and spatter
- Base has three 30-lb. pull cast-in magnets for use in any position
- 24" blade on a raised plane is standard

Model No. 430-2190
Mfg. No. 14791
Price/Each \$



ATTACHMENTS FOR PRO-MAG BURNING SQUARE & MAGNETIC BURNING GUIDE

- Each is in two sections



| Model No. | Mfg. No. | No. | Overall Length" | Price /Each |
|-----------|----------|-----|-----------------|-------------|
| 430-2200 | 14792 | 29 | 34 | |
| 430-2210 | 14793 | 30 | 48 | |
| 430-2220 | 14794 | 31 | 72 | |

STEEL HAND STAMPS

- For hand-held, hammer struck applications
- Manufactured from high quality steel
- Induction hardened for added durability and extended life
- Bevelled striking edge prevents breakage and accidents during use
- Stamping end is hardened at 58-62 HRC and the striking end is hardened to 38-43 HRC to prevent splintering
- Letter sets contain 27 pieces, "A" through "Z" and "&"-ampersand
- Number sets contain 9 pieces, "0" through "9", numbers "6" and "9" are interchangeable

aurora tools®



| Model No. | Stamp Size" | Type | Price /Each |
|-----------|-------------|--------|-------------|
| TLZ389 | 1/8 | Number | |
| TLZ392 | 1/8 | Letter | |
| TLZ390 | 3/16 | Number | |
| TLZ393 | 3/16 | Letter | |
| TLZ391 | 1/4 | Number | |
| TLZ394 | 1/4 | Letter | |

CONTOUR® WORKER KITS

All the top sellers in one case!

- Includes: #1 Contour® Marker, #7 Centering Head, #8 Pro-Mag level, standard Radius Marker, square soapstone, holder and lockable metal carrying case

Model No. TTT484
Mfg. No. 20664
Price/Each \$

