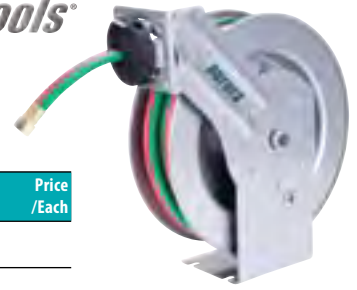


REELS & WELDING ACCESSORIES

WELDING HOSE REELS

- Heavy-duty, reinforced steel stampings for increased strength
- 1/4" oxygen and acetylene twin hose
- Leakproof double O-ring seals
- Compact design allows reels to fit in tight locations
- Multi-position guide arms for multiple mounting options
- Kinkless, oil resistant high quality hose
- Spring rewind features long life spring with declutching arbor
- Grade R hose
- Durable, corrosion-resistant powder coat paint

aurora tools



Model No.	Drive Type	Hose I.D."	Hose Length'	Max PSI	Oxygen Inlet & Outlet		Acetylene Inlet & Outlet		Dimensions			Wt lbs.	Price /Each
									W"	x	D"		
TLZ487	Spring	1/4	25	300	9/16" x 18 UNF (Female)	9/16" x 18 UNF (Female)	8	x	14 3/4	x	13 5/8	25.9	
TLZ488	Spring	1/4	50	300	9/16" x 18 UNF (Female)	9/16" x 18 UNF (Female)	8 5/8	x	20 1/2	x	20 1/2	42.2	

HOSE REELS

- Heavy-duty, reinforced steel stampings for increased strength
- For use with air and water
- Compact design allows reels to fit in tight locations
- Multi-position guide arms for multiple mounting options
- Kinkless, oil resistant high quality hose
- Spring rewind features long life spring with declutching arbor
- Durable, corrosion-resistant powder coat paint
- Good for air and water

aurora tools



Model No.	Drive Type	Hose I.D."	Hose Length'	Max PSI	Hose Outlet (M) NPT"	Reel Inlet (F) NPT"	Dimensions			Wt lbs.	Price /Each		
							W"	x	H"				
TLZ482	Spring	1/4	35	300	1/4	3/8	6	x	15 1/2	x	14	26.6	
TLZ483	Spring	3/8	25	300	1/4	3/8	6	x	15 1/8	x	13 7/8	26.2	
TLZ484	Spring	3/8	35	300	1/4	3/8	6 5/8	x	17 1/2	x	16 1/2	34.7	
TLZ485	Spring	3/8	50	300	1/4	3/8	6 1/2	x	20	x	18 3/8	40.3	
TLZ486	Spring	1/2	50	300	1/2	1/2	6 5/8	x	20 1/4	x	17 7/8	44.3	

ARC WELDING REELS

POWER OR MANUAL REWIND TO HANDLE #2 THROUGH 4/0 CABLE TO 400 AMPS

- 400-amp rated rotary electrical device
- Instant use with any cable length unwound
- For use with single conductor electrode cable or grounding lead
- Quick connection to your welder
- 4-way roller assembly
- Roller position must be specified

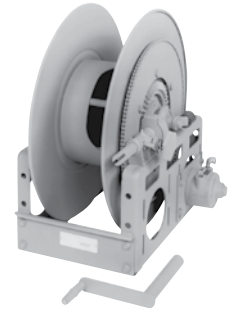
SWCR SERIES

- Non sparking ratchet assembly
- Declutching arbor is provided to prevent damage from reverse winding
- A cable stop should be used



WCR SERIES

- Gear driven crank rewind, chain and sprocket powered by an electric, hydraulic or compressed air motor
- Auxiliary rewind and pinion brake standard



Hannay Reels
The reel leader.

Model No.	Mfg. No.	Cable Capacity of Reel ¹							Approx. Weight		Standard Roller Assembly	Price /Each
		Gauge of Cable O.D."	#2 0.50	#1 0.58	1/0 0.62	2/0 0.67	3/0 0.72	4/0 0.81	Net lbs.	Ship lbs.		
SWCR												
886-1130	SWCR716-23-24-15.5G		85	85	60	60	40	85	120	R204		
TTT563	SWCR716-25-26-15.5B		-	-	-	60	50	91	126	R204		
TTT564	SWCR716-25-26-15.5A		-	-	100	-	-	106	141	R205		
WCR												
886-1921	WCR16-19-21		-	275	200	200	150	150	71	106	-	
TTT565	WCR16-23-24		-	-	-	-	300	200	78	113	-	

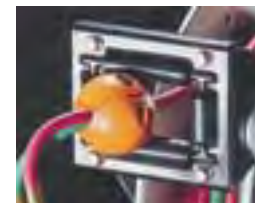
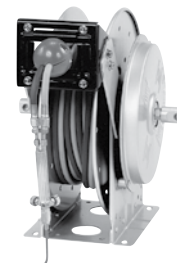
GAS WELDING REELS

SPRING REWIND TO HANDLE TWIN 1/4" THROUGH 3/8" WELDING HOSE

- Heavy-duty spring motor
- Non sparking ratchet assembly
- Declutching arbor to prevent damage from reverse winding
- Standard inlets 90° ball bearing swivel joints 1/2" female NPT threads
- Standard outlets male 9/16"-18 threads right hand for oxygen, left hand for gas
- Pressures to 300 PSI (21 bar)
- Temperatures from -40°F to 200°F (-40°C to 93°C)
- Type of gas used MUST be specified
- 4-way roller assembly (roller position must be specified)
- Hose stop is required

Hannay Reels
The reel leader.

Shown with optional hose and hose stop in the optional "TR" position



Model No.	Mfg. No.	Hose Capacity of Reel ¹		Approx. Wt.		Standard Roller Assembly	Price /Each
		I.D." O.D." 0.53	1/4 0.66	Net lbs.	Ship lbs.		
TTV150	N416-17-18-8L	2/50	-	64	71	N204	
TTV151	N416-19-20-8L	-	2/50	68	75	N204	
TTT568	N416-19-20-10.5C	2/25	2/25	70	77	N204	
886-1060	N416-19-20-8J	2/50	2/50	74	83	N204	
TTT569	N416-23-24-10.5G	2/75	2/75	94	112	N204	
886-1080	N417-23-24-10.5G	2/100	2/100	95	115	N205	

Model No.	Mfg. No.	Description	Price /Each
886-1030	HS-3	Hose Stop	

GAS CYLINDER CABINETS

- Heavy-duty construction
- 2" x 2" 10-gauge formed steel angle posts
- 9-gauge wire mesh doors and walls for venting
- 14-gauge checker plate shelves and roof
- English and French warning labels included
- Padlock hasp for added security
- Innovative door design allows for left or right opening installation
- Easy assemble, knock-down feature saves on shipping costs

Note: Constructed to meet or exceed strict CSA International B149.2-0 Propane Storage and Handling Code. Cylinders must be stored vertically at all times.



SEB837



SAF847



SEB838



SAF848



SAF837

COMPRESSED GAS (9" DIAMETER CYLINDERS)

Model No.	Dimensions			Cylinder Capacity	Wt. lbs.	Price /Each
	W"	x	D"	x	H"	
SAF837	44	x	30	x	74	10 210
SAF848*	88	x	30	x	74	20 420

*Consists of two units of the SAF837

LIQUID PROPANE (35-LB CYLINDERS)

Model No.	Dimensions				Cylinder Capacity	Wt. lbs.	Price /Each
	W"	x	D"	x			
SEB837*	30	x	17	x	37	2	70
SEB838*	17	x	17	x	69	2	85
SAF836	44	x	30	x	37	6	135
SAF847	44	x	30	x	74	12	270

*All-welded, fully assembled

ALUMINUM LPG CYLINDER LOCKER STORAGE

- Constructed of 100% welded aluminum, they won't rust, corrode or discolor
- Aluminum, expanded metal panels are the heaviest in the industry – 20% heavier than others – offering additional resistance to tampering
- Heavier gauge aluminum mesh and extruded (not bent) frame add rigidity
- Justrite® offers an exclusive solid aluminum roof panel that slants to the back to shed water and ice

Aluminum cylinder storage lockers are ideal for any facility using a forklift truck or welding equipment.

Sloped roof design sheds water and ice to the rear. Solid top reinforces stability.

Comes complete with warning and full/empty cylinder labels. Extruded framework provides superior strength.



Heavy expanded aluminum for improved security. All-welded aluminum construction resists abusive outdoor elements – won't rust or discolor.

Easy to use rack positions cylinders securely and stores 20 and 33-lb. cylinders.

Designed to accept padlock (not included) to prevent unauthorized access.

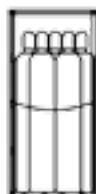
Cylinders stay clear of ground with strong floor plate.

Pre-drilled hole at each corner for anchoring. Accepts 1/2" anchor maximum security and stability.

Complies with NFPA 58 and OSHA 1910.110 or CSA-B149.2.



SAI577



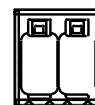
SAI576



SAI575



SAI574



SAI573



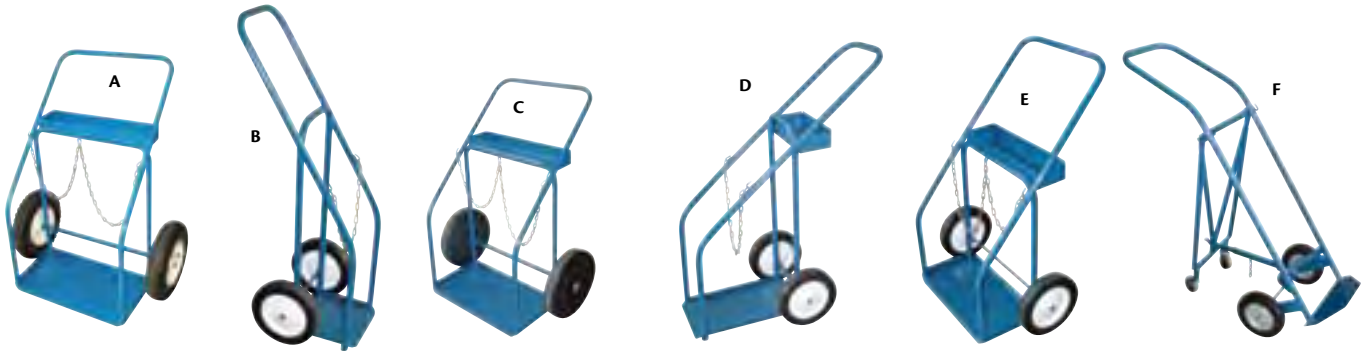
Model No.	Mfg. No.	Description	Cylinder Type	Capacity	W"	x	H"	x	D"	Wt. lbs.	Price /Each
SAI573	23009	4-Cylinder Vertical	LPG	4 - 20 or 33-lb cylinders	30	x	33 1/2	x	32	79	
SAI574	23010	8-Cylinder Vertical	LPG	8 - 20 or 33-lb cylinders	30	x	65	x	32	114	
SAI575	23011	16-Cylinder Vertical	LPG	16 - 20 or 33-lb cylinders	60	x	65	x	32	211	
SAI576	23006	10-Cylinder Vertical	Compressed Gas	Up to 10 comp. gas cylinders	30	x	65	x	32	102	
SAI577	23007	20-Cylinder Vertical	Compressed Gas	Up to 20 comp. gas cylinders	60	x	65	x	32	187	

REELS & WELDING ACCESSORIES



GAS CYLINDER CARTS

• Choice of carts for a wide range of cylinder sizes and terrains



Model No.	Base W" x D"	Wheel Type	Capacity	Weight lbs.	Price /Each
A	ML413	25 x 13	16" Dia. pneumatic	244 cu.ft. oxygen, 300 cu.ft. acetylene cylinders	55
B	ML414	12 x 10	10" Dia. semi-pneumatic	300 cu.ft. 9" Dia. cylinder	22
C	ML415	25 x 13	14" Dia. x 3" rubber	244 cu.ft. oxygen, 300 cu.ft. acetylene cylinders	55
D	ML416	12 x 18	10" Dia. semi-pneumatic	144 cu.ft. or 244 cu.ft. oxygen, 130 cu.ft. acetylene cylinders	27
E	ML417	19 x 10	10" Dia. semi-pneumatic	144 cu.ft. or 244 cu.ft. oxygen, 130 cu.ft. acetylene cylinders	30
F	TTT455	12 x 14	8" Dia. rubber semi-pneumatic	244 cu.ft. oxygen cylinder	30

MINI-MIG WELDING CARTS

MM-8 Series Cylinder Cart

- Designed to carry a variety of Mini-MIG, Inverters, and Plasma machines
- Dimensions: 18" W x 36" D x 17" H
- Weight: 48 lbs
- Cylinder capacity: 9 1/2"

Model No. ML419
Price/Each \$



DUAL-CYLINDER DOLLIES

- Accommodates cylinders up to 12" in diameter, including a class 300 SCF industrial gas cylinder and a no. 5 acetylene cylinder
- Composite construction withstands extreme weather conditions
- Tough 16.5" diameter pneumatic wheels gives maneuverability on rough terrain
- 36" built-in tray holds tools, valves and torches
- Powder coat finish steel tool/supplies tray
- Handle offers maximum stability allowing for wrapping of hose equipment
- Rust, corrosion and spark resistant
- Will not dent, chip or scratch paint from cylinders
- Dimensions: 36.88" L x 23.5" W x 45" H
- Weight: 57 lbs.
- Load capacity: 500 lbs.

Model No. SAP856
Mfg. No. 7302-BK
Price/Each \$



FOUR-WHEEL CYLINDER HAND TRUCKS

- Fully welded construction of heavy 11 and 10-gauge steel with 3/16" thick steel supports and 1" diameter by 14-gauge round steel tube for maximum strength
- These durable units include two 10.5" pneumatic tires to provide easy transportation of medical, industrial and commercial use gas cylinders
- Swing-down steel carriages allow use of rear swivel casters for additional safety and control
- Single cylinder trucks handle cylinders up to 12" in diameter; dual cylinder carts can handle cylinders up to 10" in diameter
- Heavy poly straps with cinch buckle system provide security during transport
- Epoxy powder coat finish for durability
- Load capacity: 1000 lbs.



MOBILE CYLINDER SUPPORTS

- Securely holds four cylinders up to 12" in diameter even in transit
- Constructed from 11-gauge, all-welded steel with grey enamel finish
- Includes push handle and easy rolling caster or without handle and casters for forklift attaching
- Dimensions: 24" W x 40" D x 36" H
- Load capacity: 1200 lbs.



Model No.	Mfg. No.	Description	Dimensions L" x W" x H"	Wt. lbs.	Price /Each
MK817	G-904	Single Cylinder Hand Truck	19 x 21 x 47	48	
MK818	G-953	Dual Cylinder Hand Truck	20 x 31.5 x 47	65	

Model No.	Mfg. No.	Description	Wt. lbs.	Price /Each
SB865	G-430	4 Unit Mobile Cylinder Cart	153	
SB866	G-450	4 Unit Mobile Cylinder Cart (forklift attachment)	122	

GAS CYLINDER POLY-STANDS

- Free-standing design maximizes floor space
- Made of polyethylene resisting sparking, rust and corrosion
- Prevents accidental tipping with durable nylon straps to keep cylinders and stand secure
- Ideal for inexpensive wall-mounted storage
- Accommodates two cylinders 3" to 12 3/8" diameter
- Dimensions: 28" W x 14" D x 30" H
- Handling capacity of 400 lbs.
- Weight: 14 lbs.
- Colour: Yellow
- OSHA 29 CFR.1910 approved

Model No. SE966
Mfg. No. 7212-YE
Price/Each \$



6-PACK CYLINDER RACKS

- Maximizes floor space
- Will not rust or corrode
- Suited for outdoor storage
- Forkliftable, crane liftable or optional black caster frame for mobility to go anywhere
- Sturdy retaining straps assure stable storage
- Optional black accessory strap can be added to bottom for extra security
- Molded-in cap holders to keep cylinder caps at hand
- Cylinder rack has a loading capacity of 1200 lbs.
- Optional black rack ramp attaches for easy manoeuvring of cylinders
- Handling capacity of 1000 lbs.
- Handles 3" to 10" diameter cylinders
- OSHA 29 CFR.1910 approved



Model No.	Mfg. No.	Description	Dimensions			Wt. lbs.	Price /Each
			L"	x W"	x H"		
SE967	7202-YE	Cylinder Rack	48	x 31	x 41	62	
SE968	7204-BK	Caster Frame	33 1/2	x 31 1/2	x 4 1/2	50	
SE969	7205-BK	Bottom Straps	-			1	
SE970	7203-BK	Rack Ramp	46	x 20	x 6	21	

GAS CYLINDER BRACKETS

- Brackets are constructed of either epoxy powder coated 11-gauge hot rolled steel or type 304 stainless steel to endure the harshest environments
- Edges are protected with steel reinforced vinyl guarding to maintain cylinders and provide extra grip

- Support straps are 54" L x 1.5" W polypropylene with steel cinch buckle; strength rated at 1200 PSI
- Stainless steel models feature nylon snap buckles to provide durability under the most challenging environments
- Wall mount brackets support 4" to 12" diameter cylinders; bench mount brackets support 4" to 14" diameter cylinders



Model No.	Mfg. No.	Description	Dimensions				Wt. lbs.	Price /Each
			W"	x	D"	x H"		
SB860	G-100	Single Cylinder Wall Bracket, Grey	8	x	2 1/4	x 4 1/4	3	
MK819	G-100SS	Single Cylinder Wall Bracket, Stainless	8	x	2 1/4	x 4 1/4	3	
SB861	G-150	Single Cylinder Bench Bracket, Grey	8	x	2 1/4	x 4 1/4	3	
MK820	G-150SS	Single Cylinder Bench Bracket, Stainless	8	x	2 1/4	x 4 1/4	3	
SB863	G-200	Double Cylinder Wall Bracket, Grey	23 3/4	x	2 1/4	x 4 1/4	9	
MK821	G-200SS	Double Cylinder Wall Bracket, Stainless	23 3/4	x	2 1/4	x 4 1/4	9	
SB864	G-300	Triple Cylinder Wall Bracket,	35 3/4	x	2 1/4	x 4 1/4	11	

UNIVERSAL MODULAR CYLINDER BRACKETS

- Design your own configuration
- Units link together to customize the amount of cylinders needed
- Attaches to any wall securely and easily
- Yellow polyethylene
- Accommodates 3" to 10" diameter cylinders
- Straps included
- Dimensions: 15.3" W x 3.3" D x 6.3" H
- Weight: 1 lbs.
- OSHA 29 CFR.1910 approved

Sold individually
Model No. SED115
Mfg. No. 7216-YE
Price/Each \$



Can't find what you're looking for?

Call us today!